

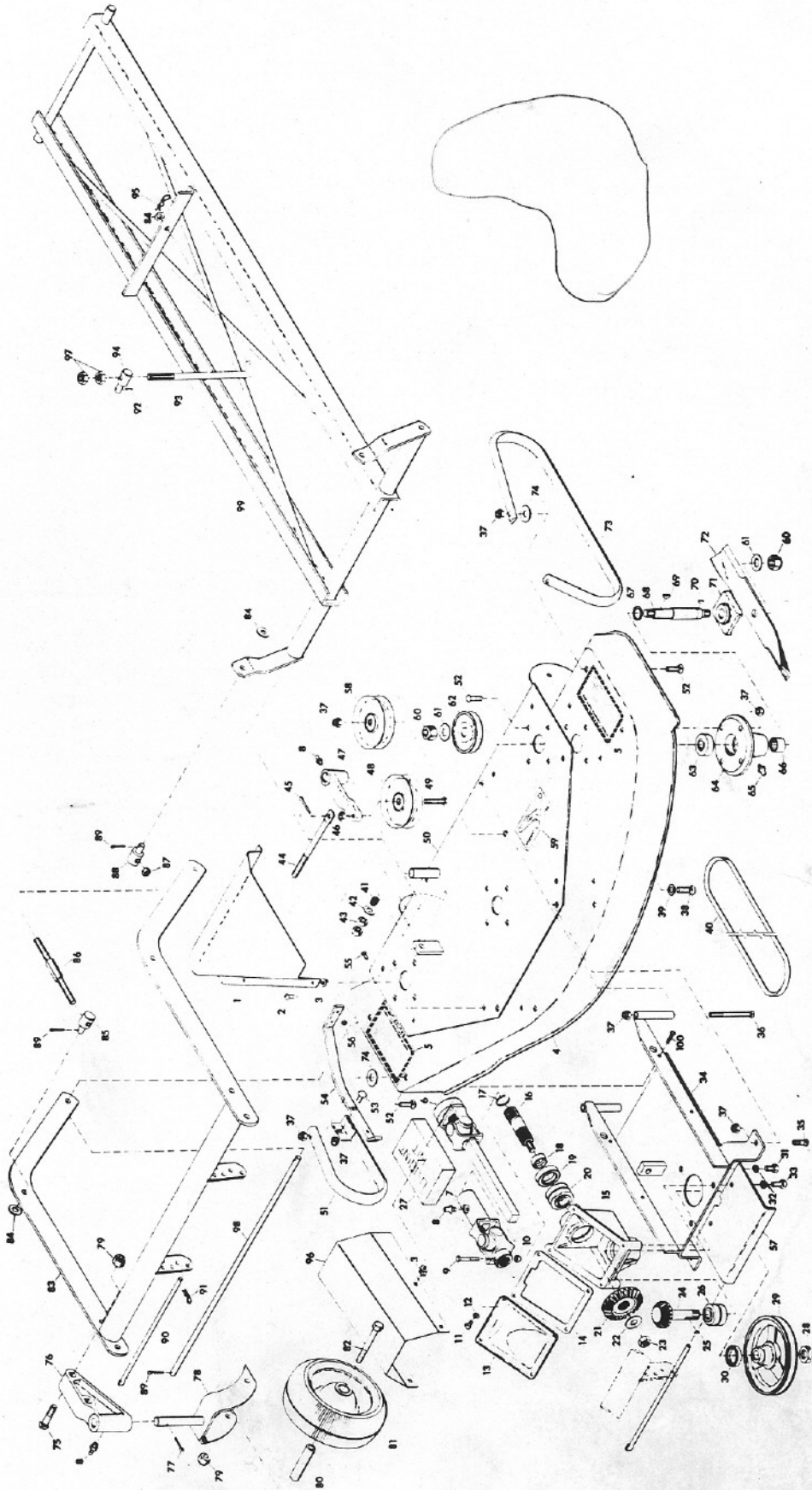
GRAVELY

To continue its program of quality and design improvement, the manufacturer reserves the right to change specifications, design or prices without notice and without incurring obligation.

ILLUSTRATED PARTS LIST

FRONT MOUNTED 50"
3 SPINDLE ROTARY MOWER
FOR RIDING TRACTOR

Model Number	15668E1
Effective Date	9-15-72
Form Number	19846P1



<u>ITEM NO.</u>	<u>PART NO.</u>	<u>DESCRIPTION</u>
1	10994P2	Pulley Cover (R.H.)
NS	10995P2	Pulley Cover (L.H.)
2	160515	1/4-20 x 1/2 Pan Head Machine Screw
3	11777P1	Plastic Grommet
4	19364A1	Deck Weldment
5	18549P1	Danger Decal
6	15802P1	Male U-Joint End
7	13518P1	Female U-Joint End
8	9411027	Lube Fitting
9	180044	1/4-20 x 2 Hex Head Bolt
10	9419454	1/4-20 Washer Insert Locknut
11	180016	1/4-20 x 1/2 Hex Head Capscrew
12	120380	1/4 Spring Type Lockwasher
13	10982P1	Gear Housing Cover
14	11231P2	Gear Housing Gasket
15	14636P1	Casting, Gear Box
16	14637P1	Shaft, Drive
17	14642P1	Ring, Retaining
18	14641P1	Spacer, Ring
19	14646P1	Seal, Grease
20	14640A1	Bearing, Roller
21	19607P1	Bevel Gear
22	15369P1	Washer
23	435507	1/2-13 Washer Insert Locknut
24	19608P1	Gear, Pinion Shaft
25	431787	#61 Woodruff Key
26	14644A1	Bearing, Roller
27	12134P1	U-Joint Kit
28	451539	Hex Jam Nut
29	14660P1	Sheave, Drive
30	14645P1	Seal, Grease
31	180173	1/2-13 x 1 Hex Head Bolt
32	120384	1/2 Spring Type Lockwasher
33	180175	1/2-13 x 1-1/4 Hex Head Bolt
34	11239A4	Gear Housing Support Weldment
35	120915	3/8-16 x 1 Rd. Hd. Sq. Nk. Bolt
36	126729	3/8-16 x 4-1/2 Rd. Hd. Sq. Nk. Bolt
37	456004	3/8-16 Washer Insert Locknut
38	126416	3/8-16 x 1-3/4 Rd. Hd. Sq. Nk. Bolt
39	120388	7/16 Flatwasher
40	11216P1	V-Belt
41	11779P1	Spring
42	120395	15/32 Flatwasher
43	271501	7/16-14 Hex Nut
44	11778P1	Idler Rod
45	179252	1/16 x 1 Cotter Pin
46	124829	3/8-16 x 7/32 Hex Jam Nut
47	10992P1	Idler Pivot Arm
48	11255P1	Idler Sheave
49	11313P1	Drilled Bolt
50	19357A1	Deck Support Weldment

<u>ITEM NO.</u>	<u>PART NO.</u>	<u>DESCRIPTION</u>
51	15697A1	Skid Weldment (R.H.)
52	126402	3/8-16 x 1-1/4 Rd. Hd. Sq. Nk. Bolt
53	126227	3/8-16 x 3/4 Rd. Hd. Sq. Nk. Bolt
54	11267P1	Safety Shield
55	126193	10-24 x 5/8 Rd. Hd. Sq. Nk. Bolt
56	190254	10-24 Nut, Washer Insert
57	15811P1	Plate Guide
58	11316P1	Idler Sheave
59	11715P1	Belt Installation Decal
60	9418692	5/8-11 Locknut
61	131016	21/32 x 1-5/16 x .095 Flat Washer
62	10988P1	Spindle Sheave
63	11641P1	Needle Thrust Bearing Race
64	15828A1	Bearing Housing Assembly
65	9411010	Grease Fitting
66	11235P1	Needle Bearing
67	11229P1	Oil Seal
68	19443P1	Bearing Housing Shaft
69	124549	#9 Woodruff Key
70	124543	1/8 x 1/2 Woodruff Key
71	10986P2	Blade Cradle
72	11234P1	Blade
73	11938P1	Skid
74	120390	9/16 Flat Washer
75	126784	Bolt Carriage, 1/2 N.C. x 2.5
76	15781P1	Arm Wheel
77	120123	1/8 x 1-1/4 Cotter Pin
78	11948A1	Caster Fork Weldment
79	435507	1/2-13 Washer Insert Locknut
80	11950P1	Bushing
81	6535P1	Gauge Wheel
82	189314	1/2-13 x 4-3/4 Hex Head Bolt
83	15813A1	Frame Weldment, Wheel
84	120396	17/32 Flat Washer
85	15785P1	Anchor Level
86	15783P1	Rod Level Adjustment
87	120378	1/2-13 Hex Nut
88	15805P1	Anchor Level
89	137185	1/8 x 1 Cotter Pin
90	15817P1	Pin, Adjustment
91	11860P1	Hair Pin Cotter
92	142485	Groove Pin
93	19313P1	Lift Rod
94	11317A1	Mower Lift Pivot Assembly
95	15691P1	Hair Pin Cotter
96	18720P1	Guard
97	120238	1/2-13 Hex Jam Nut
98	15800P1	Pin, Pivot
99	15794A1	Frame Weldment Lift
100	160536	1/4-20 x 5/8 Pan Hd Machine Screw
NS	14635A1	Drive Assembly